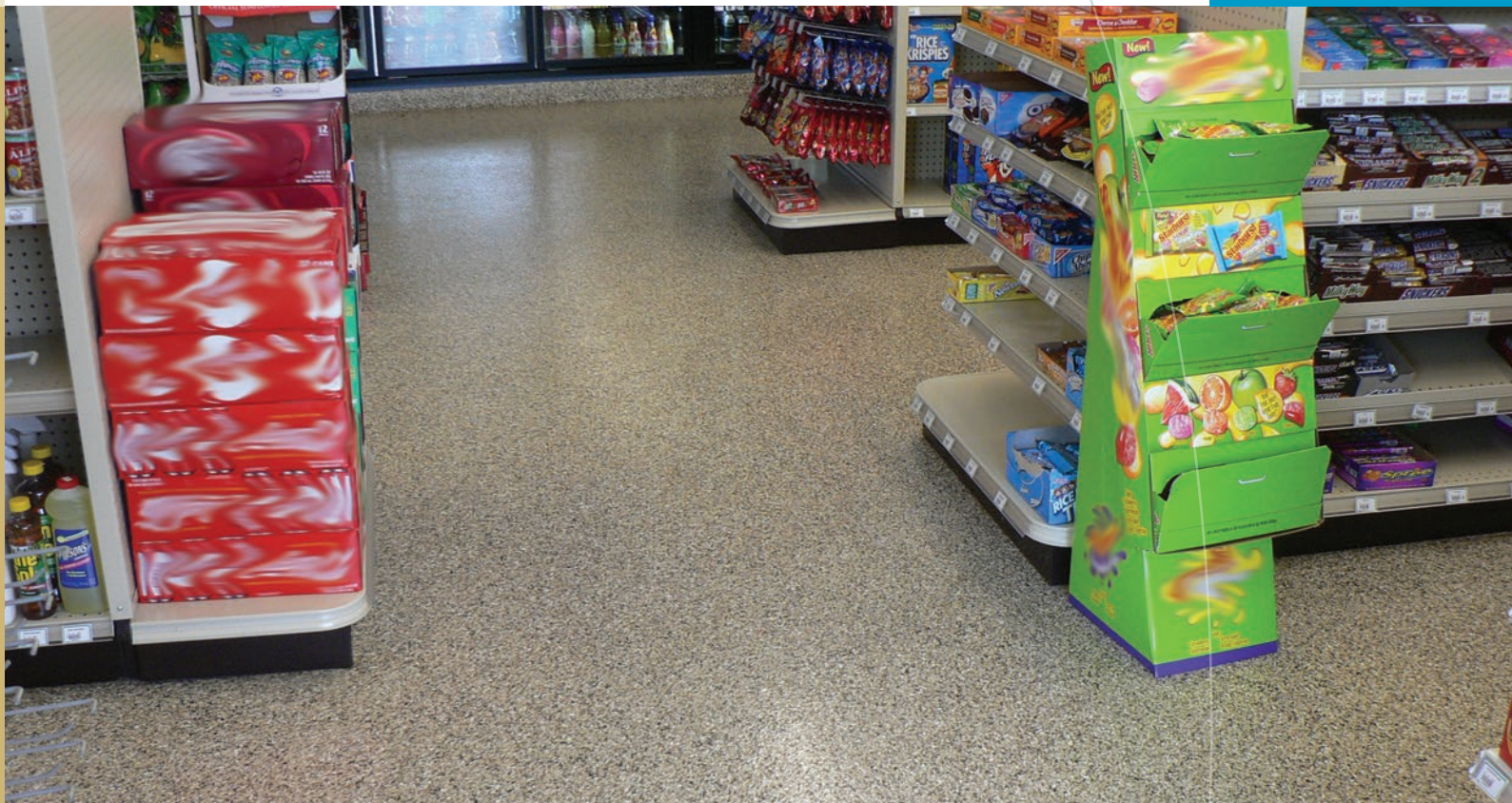




CREATING A CLEANER, SAFER, HEALTHIER WORLD.

COATINGS



Tennant MMA

METHYL METHACRYLATE REFRESHES YOUR FLOOR'S APPEARANCE WITH MINIMAL INTERRUPTION

- **LEED®** – LEED green building certification program credits may be available:
 - Indoor Environmental Quality
 - 4.2 Low-Emitting Materials, Paint and Coatings
- **VOC COMPLIANT** – Complies with SCAQMD VOC regulations
- **PRODUCTIVE** – Resume operations up to 10 times faster than traditional coating systems
- **FLEXIBLE** – Increase operational efficiency by installing coatings in temperatures down to -20° F



Tennant Company is a world leader in indoor and outdoor environmental cleaning solutions and floor and wall coatings.

CHEMICAL RESISTANCE PROPERTIES

		1 day	7 day
Acids, Inorganic	30% Chromic Acid	G	G
	10% Hydrochloric Acid	E	E
	30% Hydrochloric Acid (Muriatic)	E	E
	10% Nitric Acid	G	F
	40% Phosphoric Acid	E	E
	37% Sulfuric Acid (Battery Acid)	E	E
Acids, Organic	10% Acetic Acid	E	E
	30% Acetic Acid	G	F
	30% Citric Acid	E	E
	10% Formic Acid	E	E
	30% Formic Acid	F	P
	30% Lactic Acid	E	E
	10% Oxalic Acid	E	E
Alkalies	10% Ammonium Hydroxide	E	E
	50% Sodium Hydroxide	E	E
	50% Potassium Hydroxide	E	E
Solvents (Alcohols)	30% Ethanol	E	E
	Isopropyl Alcohol	F	P
Solvents (Aliphatic)	n-Heptane	E	E
	Turpentine	E	E
Solvents (Aromatic)	Benzene	F	P
	Phenols	G	G
	Styrene	G	F
	Toluene	F	P
	Xylene	F	P
Solvents (Chlorinated)	Methylene Chloride	P	P
	Perchloroethylene	G	G
Solvents (Ketones & Esters)	Acetone	P	P
	Methyl Ethyl Ketone (MEK)	P	P
	n-Butyl Acetate	P	P
Petrochemicals	Crude Oil	E	E
	Diesel Fuel	E	E
	Gasoline	E	E
	Kerosene	E	E
	Mineral Oil	E	E
	Paraffin Oil	E	E
	White Spirits	E	E
Miscellaneous Chemicals	Animal Fats	E	E
	Brake Fluid	G	F
	Bleach	E	E
	Fruit Juice	E	E
	Motor Oil (SAE30)	E	E
	Mustard	E	E
	Ketchup	E	E
	Salt Water (Brine)	E	E
	Skydrol® 500B	P	P
	1% Tide® Laundry Soap	E	E
	10% Trisodium Phosphate	E	E
	Vegetable Oils	E	E
	Wine	E	G

Based on 1-day and 7-day spot testing on concrete. Coating cured 2 weeks prior to testing.

Skydrol® is a registered trademark of Solutia, Inc. Tide® is a registered trademark of Procter and Gamble.

E = Excellent (No Adverse Effect) F = Fair (Moderate Adverse Effect)
G = Good (Limited Adverse Effect) P = Poor (Unsatisfactory)

Note: Reduced chemical resistance and increased staining is possible in pigmented versions of the system.

PHYSICAL/ PERFORMANCE PROPERTIES

MATERIAL PROPERTIES (LIQUID)	TEST METHOD	BODY COAT RESULTS	TOPCOAT RESULTS
Property			
Flash Point, °F/°C	ASTM D3278	Flammable	Flammable
Seta Closed Cup		Liquid	Liquid
Percent Solids, by weight	ASTM D2369	100	1100
Density	ASTM D1475	8.17 lb/gal / 0.98 kg/L	8.40-8.60 lb/gal / 1.01-1.03 kg/L
Resin Viscosity, cps Brookfield	ASTM D2393	300-350	200-300
Volatile Organic Compound (VOC)	ASTM D3960	0 lb/gal / 0 kg/L	0 lb/gal / 0 kg/L

CURED COATING PROPERTIES (DRY FILM)

Property	TEST METHOD	BODY COAT RESULTS	TOPCOAT RESULTS
Water Absorption	ASTM D570	<0.1%	<0.1%
Compressive Strength	ASTM C109	6,500 psi / 45 MPa	7,500 psi / 52 MPa
Tensile Strength	ASTM C307	2,000 psi / 14 MPa	2,100 psi / 14 MPa
Flexural Strength	ASTM C348	2,800 psi / 19 MPa	3,100 psi / 21 MPa
Hardness, Shore D	ASTM D2240	62	—
Elongation at Break	ASTM D628	35%	—
Coefficient Thermal Expansion VDE 0304		3.5 ¹⁰⁻⁵⁰ F / 6.3 ¹⁰⁻⁵⁰ C	—
Vicat Temperature DIN 53460		140° F / 60° C	—

COATING CHARACTERISTICS

Property	BODY COAT RESULTS	TOPCOAT RESULTS
Application Temperature	32° F / 0° C to 95° F / 35° C	-20° F / -28.9° C to 95° F / 35° C
Pot Life	10-20 minutes	10-40 minutes
Cure Time	1-2 hours	20-60 minutes

APPLICATION CHARACTERISTICS

Property	BODY COAT RESULTS	TOPCOAT RESULTS
Coverage Thickness 2.5 gal / 9.45 L	3/16" / 4.8 mm	1/8" / 3.2 mm
Coverage Rate	32 ft ² /unit / 2.97 m ² /unit	40 ft ² /unit / 3.72 m ² /unit
Coverage Rate	—	1100 / 2.5
Application Thickness, wet	125 mils / 3,175 microns	188 mils / 477 microns

Results are based on conditions at 75° F / 24° C.

STANDARD COLORS

These colors are close approximations; please contact Tennant for product samples. Custom colors are also available.



PEWTER



SABLE



FORD BLUE



TILE RED



SAFETY YELLOW



DOVER SKY



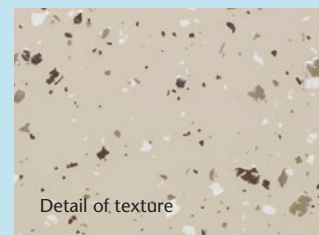
TAN



HARVEST SAND



METAL



Detail of texture

FOR FIRST IMPRESSIONS THAT LAST™

For additional information, call +1.800.553.8033

or email info@tennantco.com

Tennant
701 North Lilac Drive
Minneapolis, MN 55422 USA

USA/Canada: +1.800.553.8033
Quebec: +1.800.361.9050
Overseas: +1.763.540.1315

2.004.001.am.en Tennant MMA 12/14

©2014 The Tennant Company logo and other trademarks designated with the symbol "®" are trademarks of Tennant Company registered in the United States and/or other countries. Tennant Company's products are sold and serviced through subsidiaries of Tennant Company and distributors. All rights reserved.

www.tennantco.com
info@tennantco.com